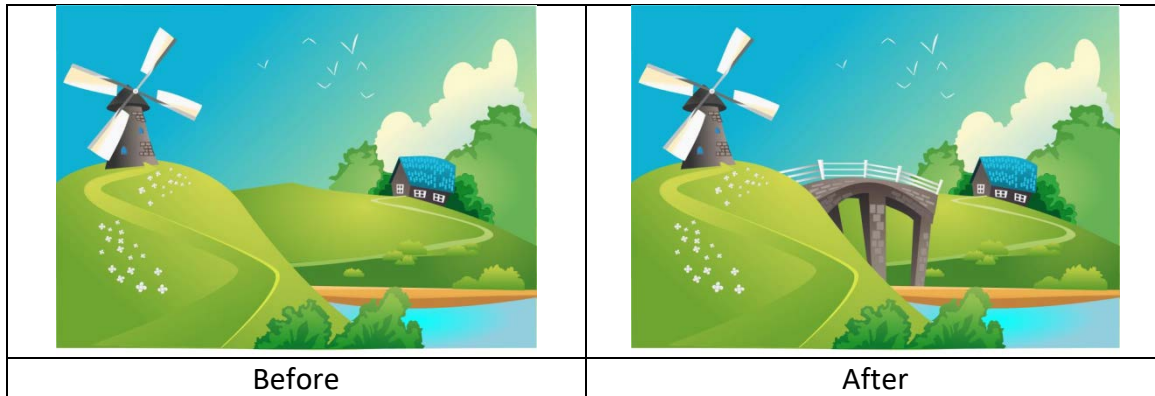


## Human Landscapes – Student Activity

### *Human activities can cause changes to our landscape*

It is easiest to demonstrate changes in landscape by drawing “Before” and “After” sketches.



Practice comparing “Before” and “After” sketches. What changed in the landscape in the above pictures? \_\_\_\_\_

#### **Scenario 1**

Tourism is becoming important in a small town. The council has decided to build a road up a small hill which is covered in lots of trees. They will also build a lookout platform at the top for tourists to take photographs of the view across the river. This means they will have to provide parking, toilets, and rubbish bins, too.

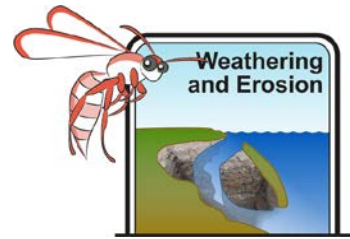
#### **Method**

- Draw a “Before” sketch of the original landscape, and an “After” sketch of changes to the landscape caused by the human activity.
  - Don’t forget to write labels to help describe your pictures!

Hints: Can roads go straight up a steep hillside, or do roads need to curve around a hill? Would tall trees get in the way of the view from the lookout platform? Can cars park on a steep slope, or do they need a flat place for a carpark? What else might council want to build besides toilets and rubbish bins?

#### **Scenario 1: Council built lookout**

<b>Before</b>	<b>After</b>



## Human Landscapes – Student Activity

**Pick TWO of the following scenarios:**

- A growing town dams the local river to create a water reservoir.
- The nearby old coal-fired factory with their tall chimneys and big rubbish piles has closed down, and the council will rehabilitate that land to create a park for people to enjoy.
- The community has grown and now needs an airport for the Flying Doctor Service. The council will probably build the airport on a marshy area at the edge of town.
- Skateboarders have raised money to build a skateboard park on the school oval.
- A new road has caused more storm water runoff to flow into the nearby river, causing flooding of the new suburb.
- A farmer cleared away old trees and scrub from a farming area, but this caused the level of groundwater to rise, and now salt water has risen to the surface.

For each scenario, create a “Before” sketch of the original landscape, and an “After” sketch of changes to the landscape caused by the human activity. Write the scenarios you chose at the top of each box, and label the changes in your drawings.

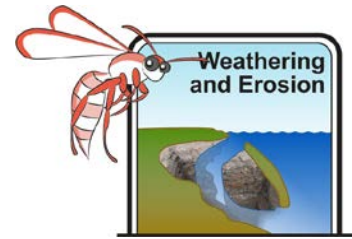
**Scenario \_\_\_\_\_:**

<b>Before</b>	<b>After</b>

**Scenario \_\_\_\_\_:**

<b>Before</b>	<b>After</b>

## Human Landscapes – Student Activity



### Extension

We tend to concentrate on the negative aspect of human actions on landscape. Can you think of examples where human action can provide positive results? Write a list below and explain how human activity can make the landscape better than it was before.

