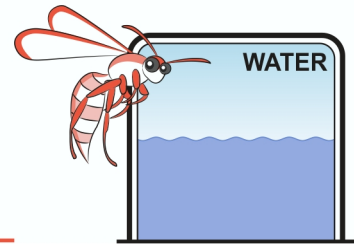


Waste Water – Student Activity



Where to locate the toilet?



When setting up camp outdoors – whether you are an army on campaign, nomadic roamers, or modern campers – it is critical to carefully consider where to place your camp facilities in relation to any nearby water sources. Most importantly, you need to make sure that waste from your makeshift toilet doesn't contaminate your drinking water. In World War I, more soldiers were killed from dysentery (a severe case of gastroenteritis caused by bacterial infection) than by enemy action. This was because often men drank water from the bottom of trenches that were next to latrines, and the dirty water caused infections. Water contaminated by human waste still kills many people around the world today. In outback Australia, the rules for locating toilets (and washing facilities) were simple:

'Down hill, down water, and down wind from the water source and camp.'

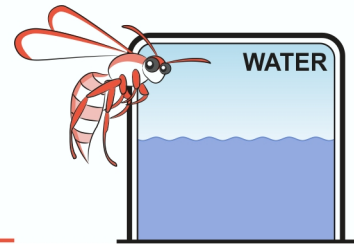
From your knowledge of the water cycle (and using common sense), explain why each of these three rules were necessary:

Down hill

Down water

Down wind

Waste Water – Student Activity



Safety

If we clean water using filter paper, a filter funnel, and a clean container, is the water safe to drink?



If you were desperately short of water, what could you do to the filtered water to make it safe to drink?

Extra for experts

Where would the best location for showering and clothes washing be?

