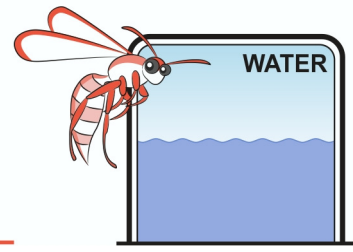
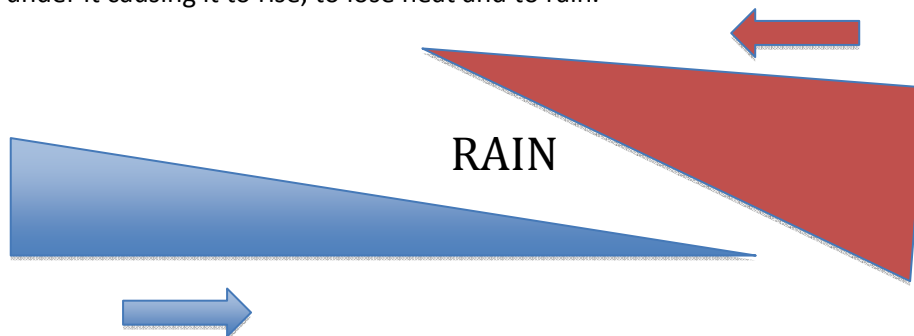


Rain - Teacher Notes



Rain falls if there is a drop in pressure or temperature. Winds blow clouds inland where they can rise over mountains, cool and drop rain. Places, such as the east coast of Tasmania where wind mostly comes from one direction can experience rain shadow. Clouds drop most of their rain on the western coast leaving little for the east. Hobart is the driest capital city of Australia.

Cold air is denser than warm moist air and travels faster. When a cold front approaches warmer air it slips under it causing it to rise, to lose heat and to rain.



Making rain

This activity works best if water is very hot. Students need to behave responsibly or it may be used as a teacher demonstration.

Materials required per student or group:

- A large beaker (about 500mL or more)
- Plastic food wrap
- Hot water
- Two ice cubes

Carefully half fill a beaker with hot water.

Stretch the plastic food wrap across the top to seal.

Place the ice cubes on the centre of the wrap

Water condenses below and falls like rain.

Extra for experts Why do my glasses steam over when I try to lift a pizza from a hot oven?

Hot moist air from the oven condenses on my cool glasses.

Water would be [sea, rivers, lakes](#). Heat is from [The Sun](#). Ice represents [cool air at height in the atmosphere](#).