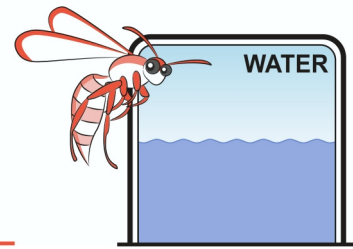


Surface Tension - Student Activities



Materials needed per student or group

- Glass slide or other flat surface
- Pasteur pipette or drinking water
- Container of clean water

Using a pipette or straw, drop water onto the flat surface to form a bead. Sketch a cross section of the bead below.



Describe the surface of the water bead.

Watch the teacher demonstration of the balloon and water

How does this explain the surface of your water bead?

Design an experiment to see if the colour of the balloon changes the result.

What would you keep the same? _____

What would you change? _____

Extension

Find the maximum angle at which surface tension is broken by gravity. Place a bead of water on a clean surface and raise one end until the bead streams down, its surface tension broken.
