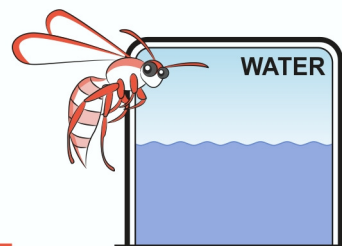
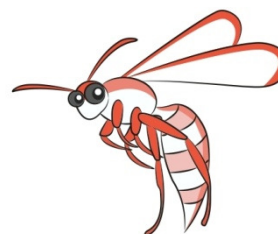






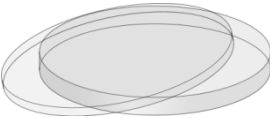

## Laboratory Rules - Student Activity



Please read and discuss the reason for the following rules

1. A teacher should always be present when entering the lab.
2. Leave all your belongings outside the lab.
3. No running in the lab. Always walk to avoid accidents.
4. No shouting or messing around with anything or anyone.
5. Long hair should be tied back.
6. Safety goggles may be worn to protect your eyes.
7. Eating and drinking in the laboratory is not allowed.
8. Follow all instructions carefully.
9. Ask questions if you are uncertain about the experiment.
10. When finished with your experiment waste materials should be put in the correct containers.
11. Put away all your equipment and clean your work bench.
12. Wash your hands after activities.



Equipment		Notes
Beaker		
Test Tube		
Filter funnel		
Filter paper		
Petri dish		
Pasteur pipette		

I have read and will obey our laboratory rules \_\_\_\_\_