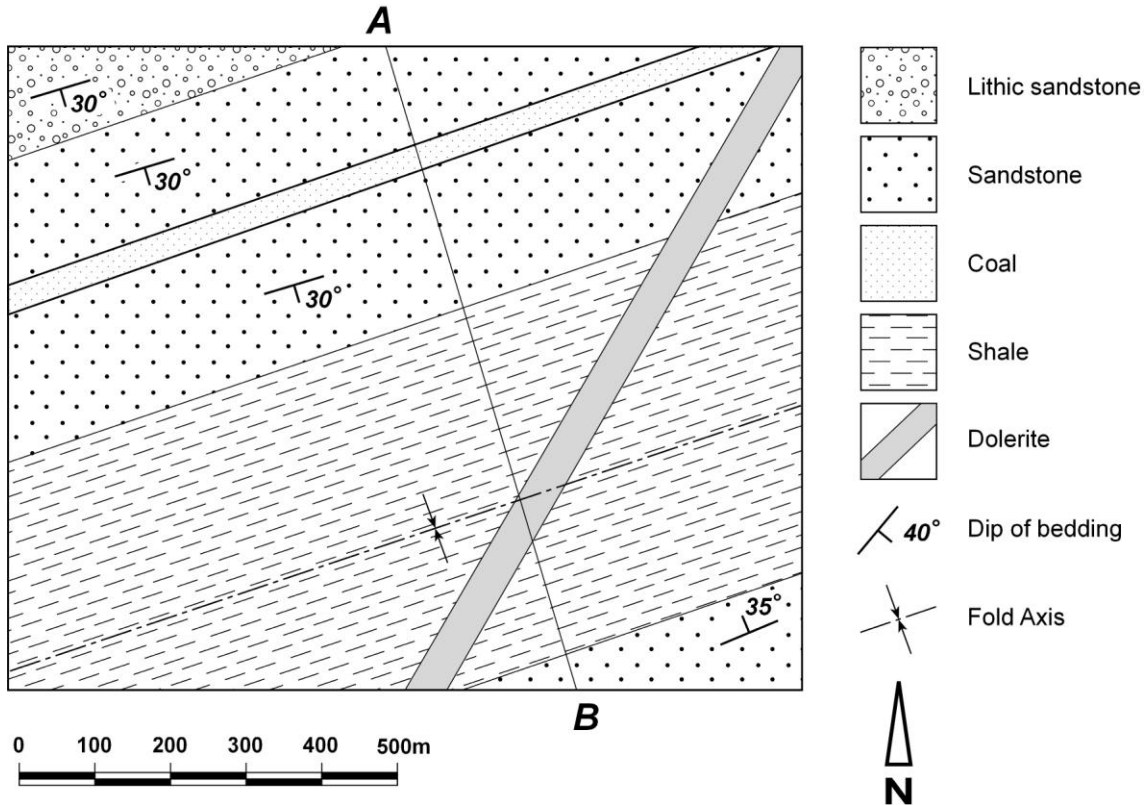


Geological Mapping Exercise 9



1. For the geological map below:

- Draw the topographical profile A-B using the contour lines
- Draw a geological cross section along the profile using a vertical scale of 1cm : 100m.
- Interpret the sub-surface geology by constructing appropriate geological boundaries.
- Label the fold axis on your cross section



Geological Mapping Exercise 9



2. What kind of fold is present? Explain how you could interpret this from the map only.

3. What is the relative age of the dolerite, shale and coal seam? _____

4. A chilled margin was observed in the dolerite. Explain what a chilled margin is and how it occurs.

5. Write a brief geological history of the area.
