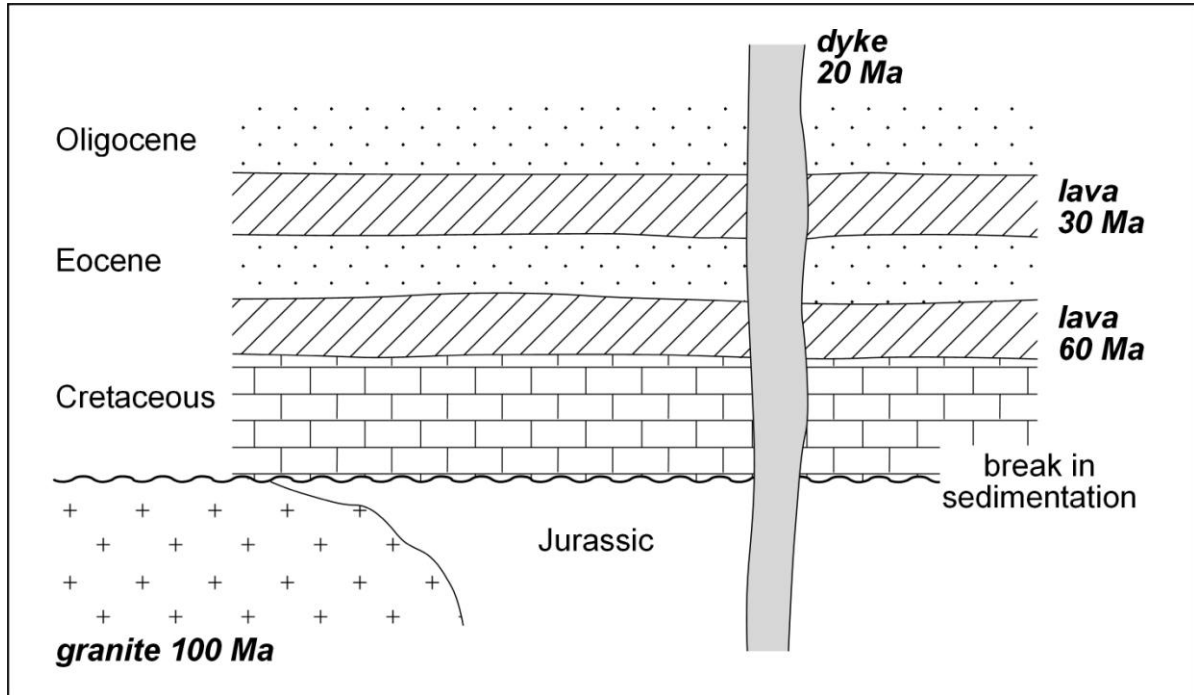


## Geological Mapping Exercise 1

The diagram shows a geological section in a quarry. The age of the igneous rocks is given in millions of years (Ma).



1. Work out the minimum and maximum age for each of the following rock strata.

	Minimum	Maximum
a) Oligocene		
b) Eocene		
c) Cretaceous		
d) Jurassic		

2. Which **Laws** of Geology did you use to work out your answers?

---



---



---



---